



a g l o b a l  
**E v e n t**  
**M a r k e t i n g**  
c o m p a n y



**PICO (THAILAND) PLC.**

**20 December 2004**

# Agenda

---



- **Consolidated Result**
  - **Financial Highlights**
  - **Dividend Payout**
-

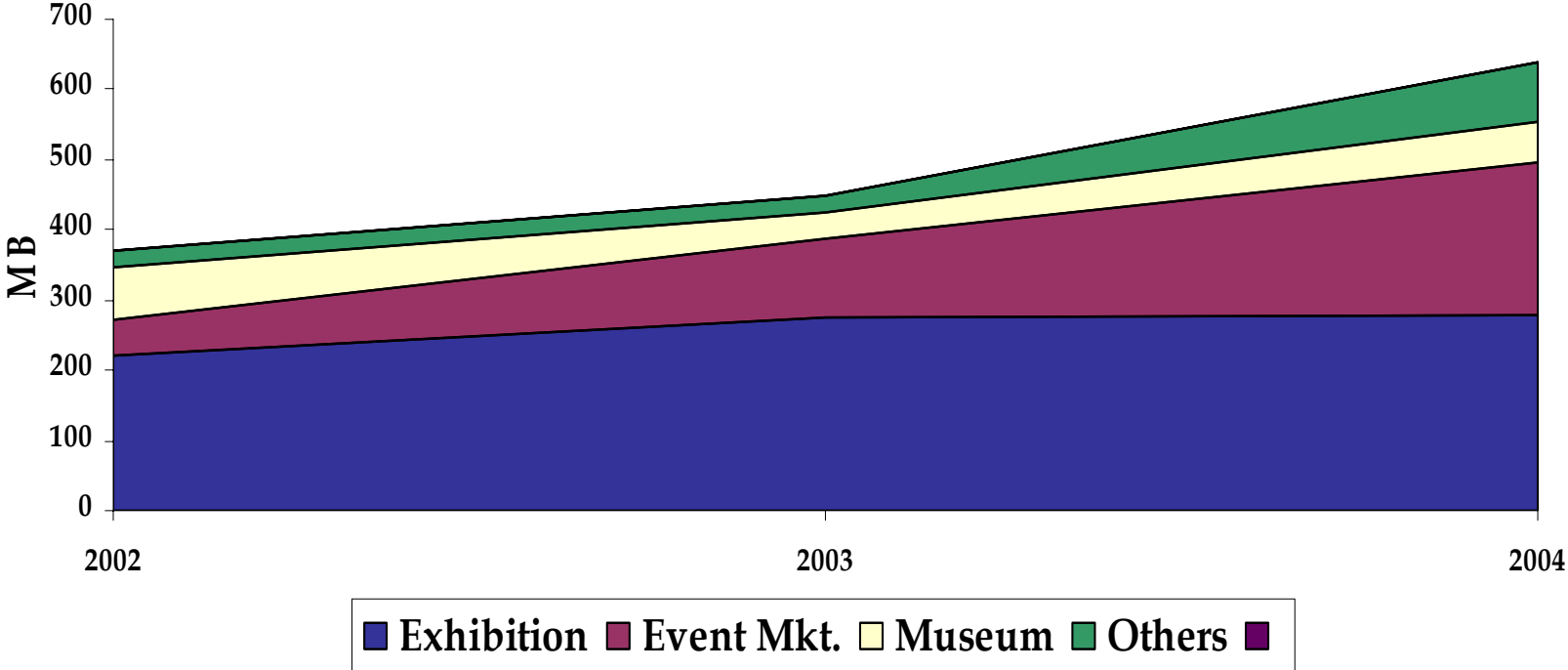
# Consolidated Financial Result 2004

## Financial Performance

	2002	2003	2004
Total Revenue (MB)	374	449	642
Growth of Revenue (MB)		20%	43%
GP Margin (MB)	105	124	172
GP Margin (%)	28%	28%	27%
EBIT (MB)	37	48	64
NPAT (MB)	23	30	41
NP Margin (%)	6.2 %	6.7%	6.4%



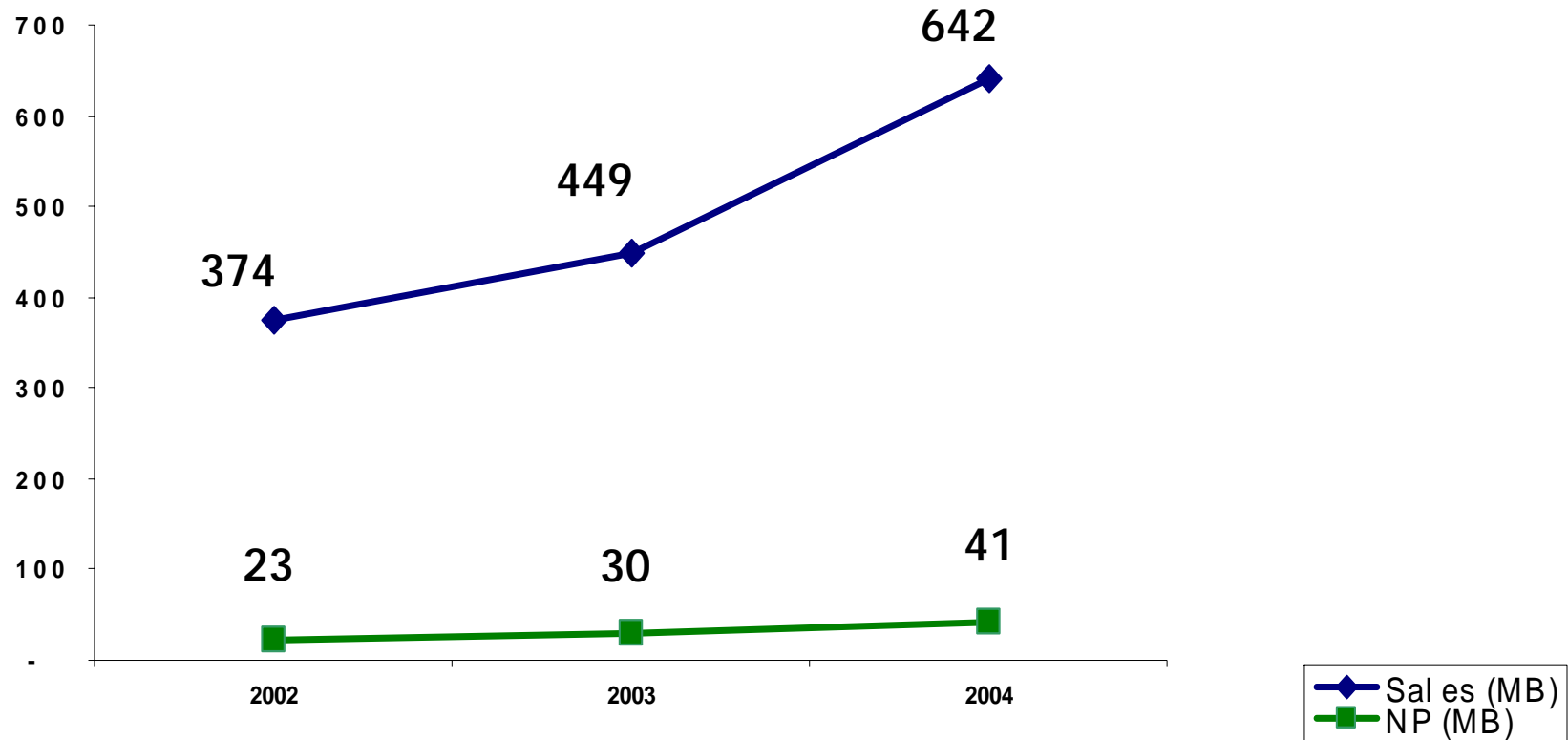
# Revenue Growth



Year



# Comparison Sales & NP 2002-2004



# Consolidated Financial Result 2004

---

## Financial Status 2003-2004

	2003	2004
Current Assets	166	297
Non-current Assets	69	73
<b>Total Assets</b>	<b>235</b>	<b>370</b>
Current Liabilities	106	124
Non-current Liabilities	7	2
<b>Total Liabilities</b>	<b>113</b>	<b>126</b>
Shareholders' Equity	122	244
<b>Liabilities &amp; Share Equity</b>	<b>235</b>	<b>370</b>

---

# Agenda

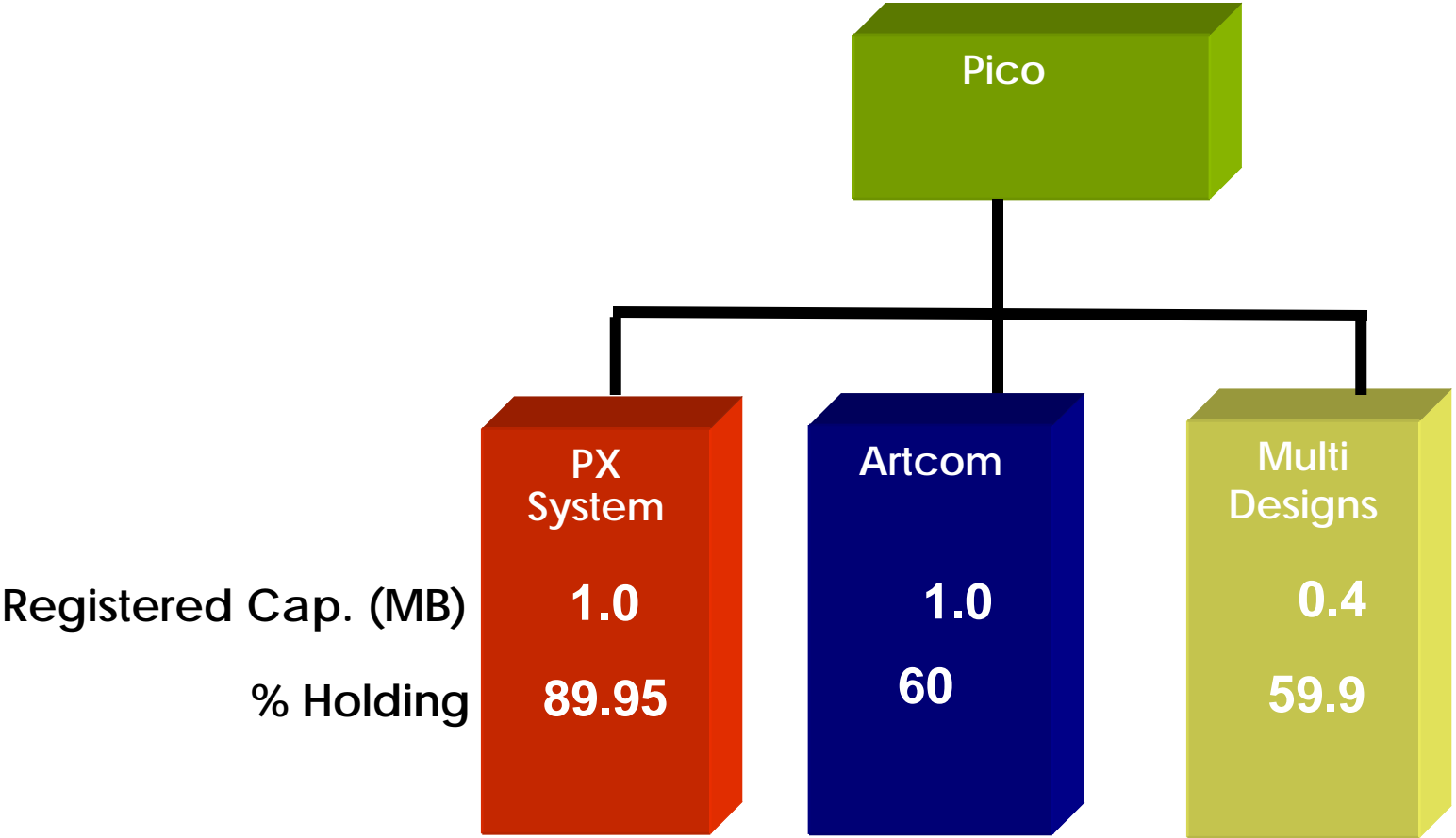
---



- Consolidated Result
  - Financial Highlights
  - Dividend Payout
-



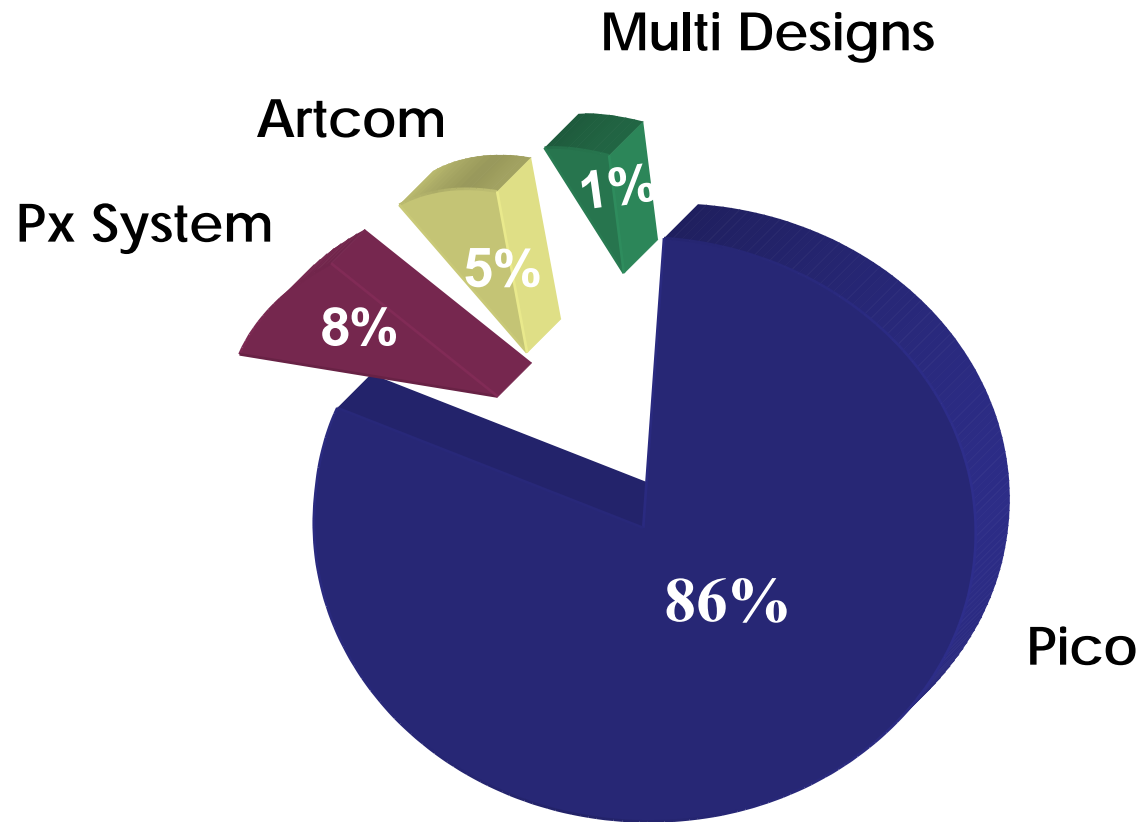
# Company Structure





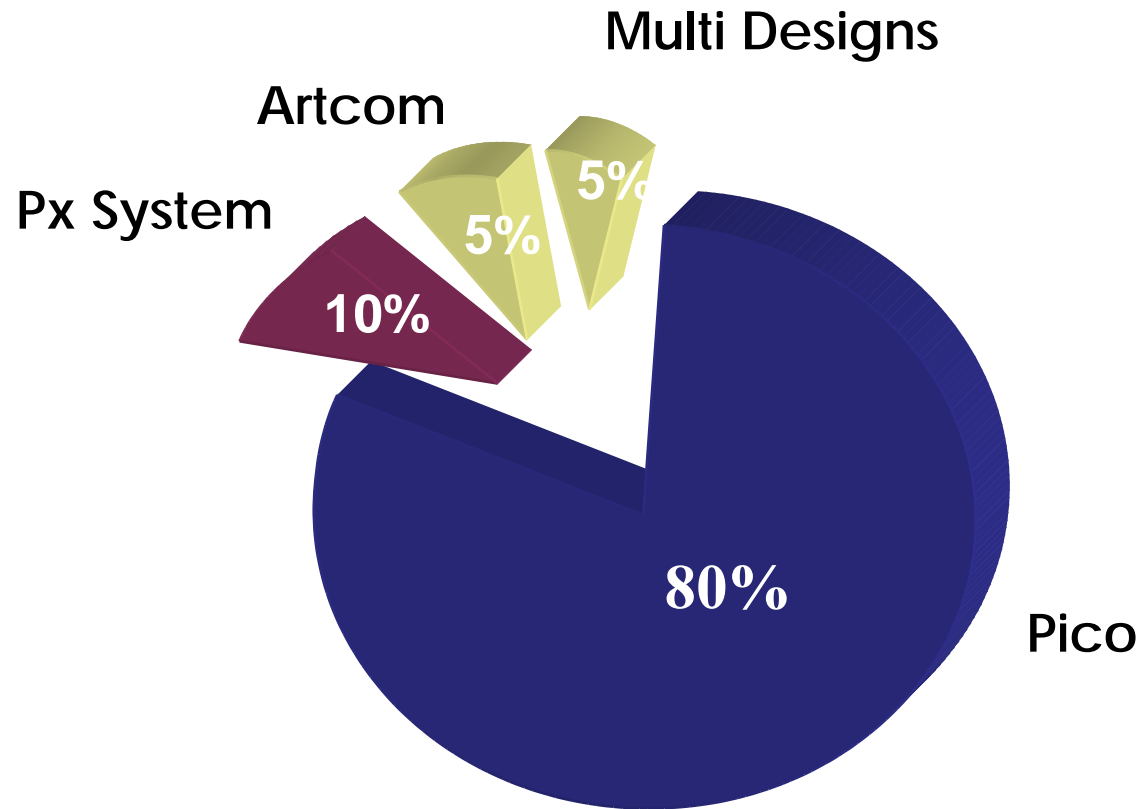
# 639 MB. Revenue Contribution

---



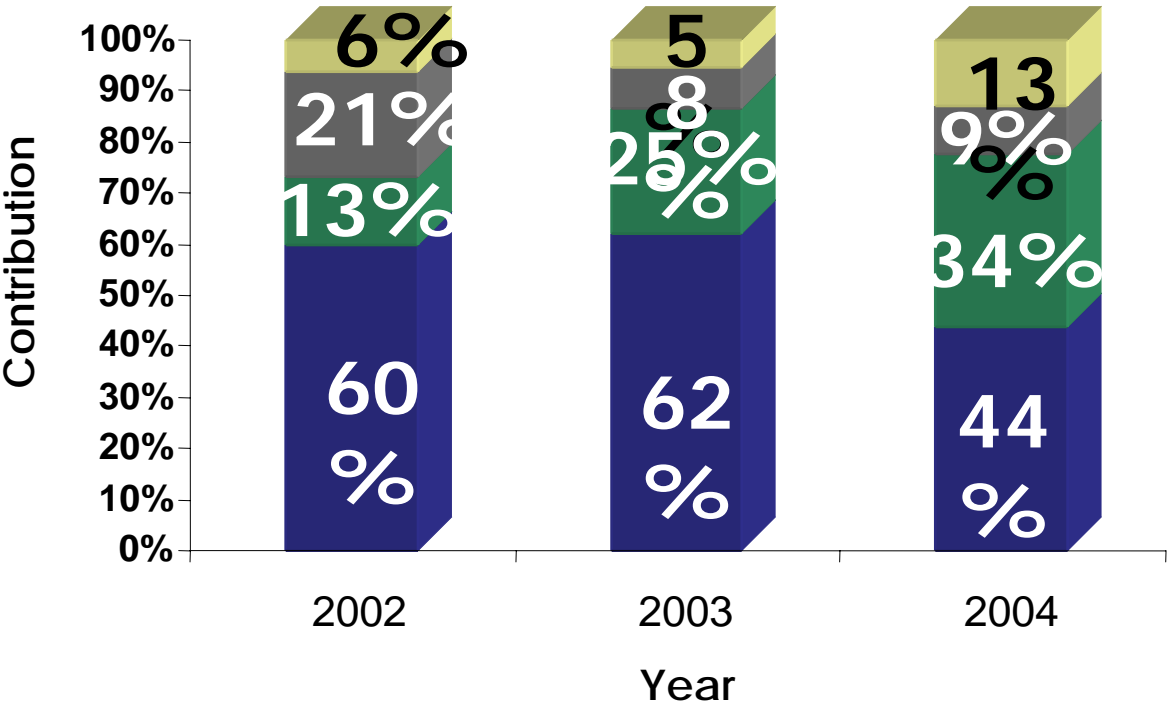
# 41.17 MB. NPAT Contribution

---





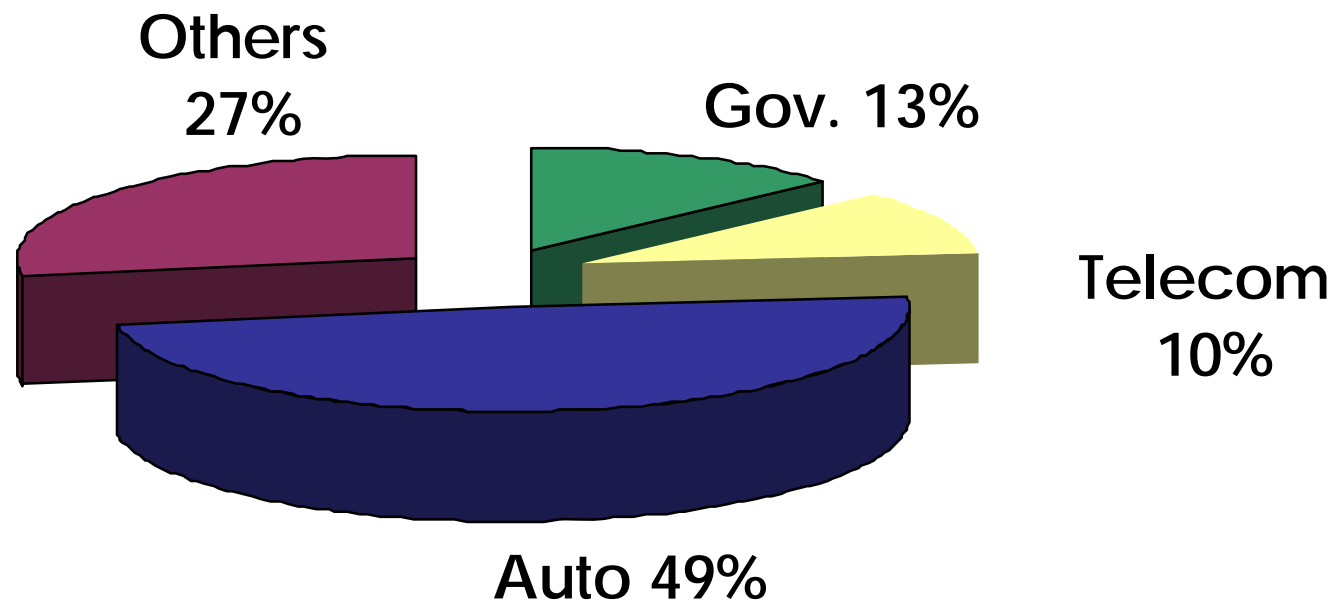
# Revenue by Services : 2002 - 2004



Exhibition
  Event Marketing
  Museum
  Others

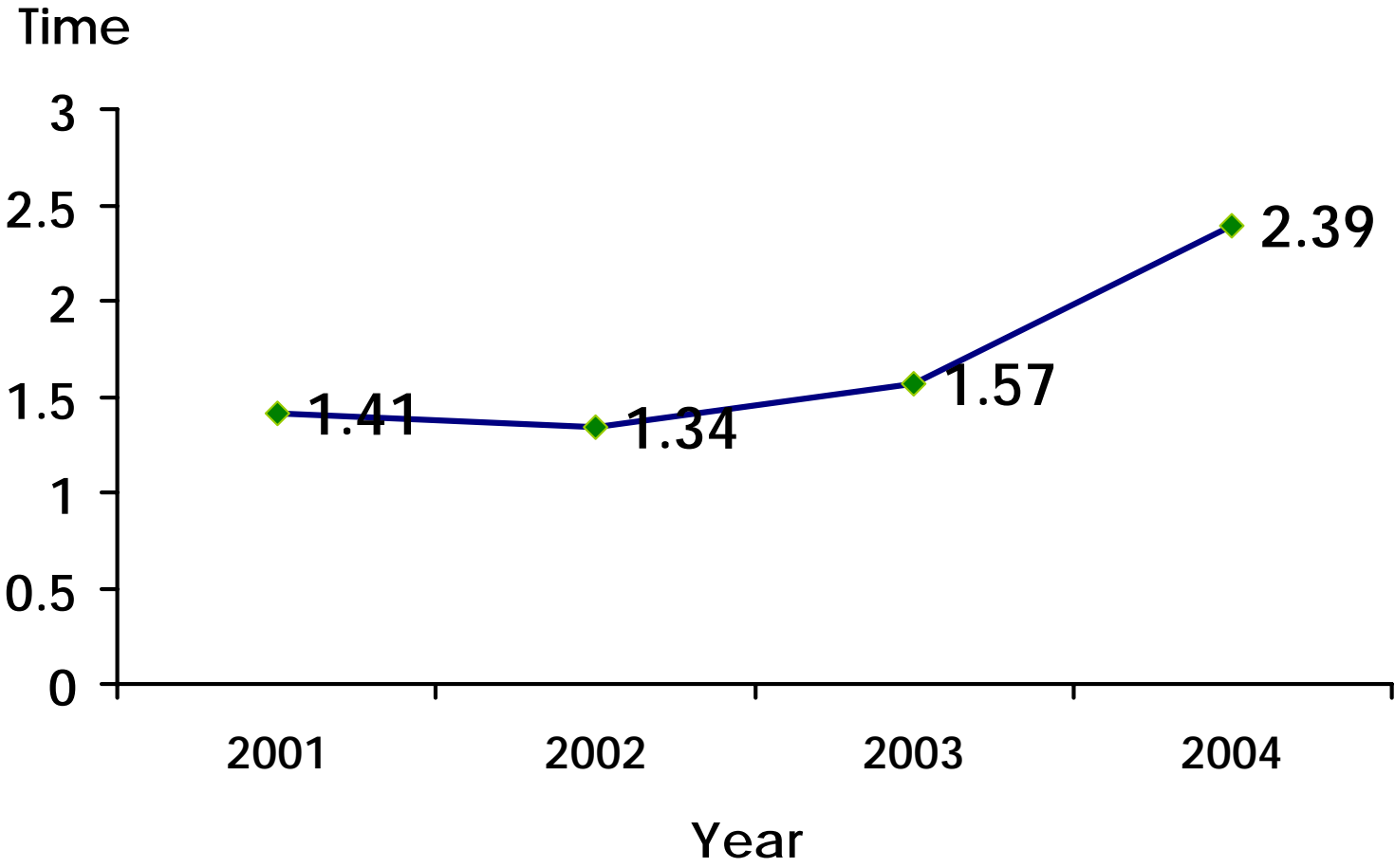
# Major Clients 2004

---





# Liquidity Ratio



Strong working Capital



# Cashflows Status

---

## Cashflows from

	2003	2004
Operating Activities	36,374	2,406
Investing Activities	(2,032)	(8,870)
Financing Activities	<u>(14,269)</u>	<u>65,437</u>
Net Increase / Decrease	20,073	58,973
Beginning Balance	<u>16,198</u>	<u>36,271</u>
Ending Balance	<u>36,271</u>	<u>95,243</u>

---

# Agenda

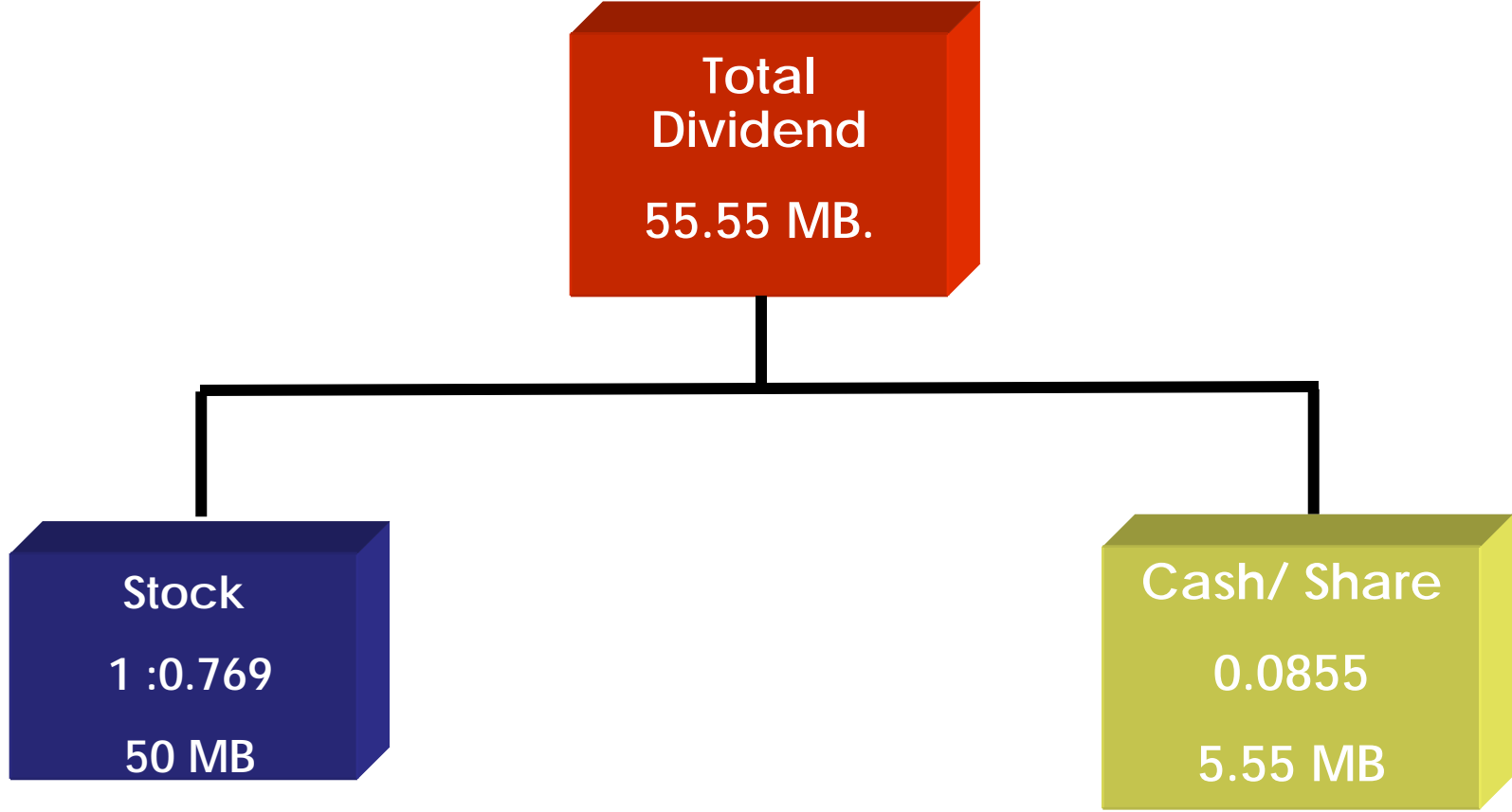
---



- Consolidated Result
  - Financial Highlights
  - Dividend Payout
-

# Dividend Payout

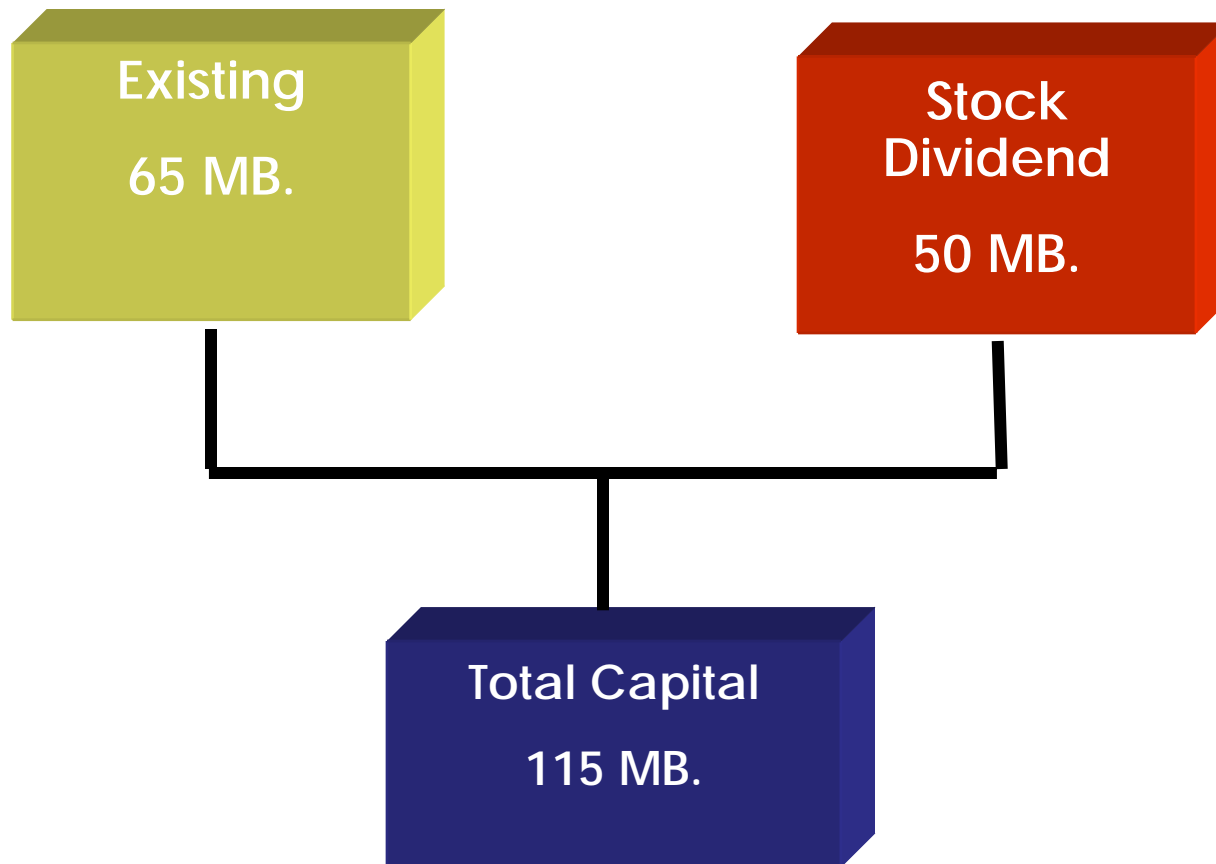
---





# Change of capital

---





a g l o b a l  
**E v e n t**  
**M a r k e t i n g**  
c o m p a n y

